

# COMMERCIAL/INDUSTRIAL COLOR CHART

COOL ROOF COLORS

## ❖ SIGNATURE® 200 Standard Colors

**SILICONIZED  
POLYESTER**

*Polar White is a Straight Polyester.*

26-GAUGE MATERIAL

- For the most current information available, visit our website at [www.mbc.com](http://www.mbc.com).
- See product selection chart for gauge and color availability.
- All products available in smooth or embossed finish.
- Trim available in all colors.
- A 25-year limited paint warranty available for all colors upon written request, please inquire. (Outside the continental United States, please inquire.)
- Signature® is a registered trademark of NCI Group, Inc. KYNAR 500® is a registered trademark of Arkema, Inc. HYLAR 5000® is a registered trademark of Solvay Solexis.



HAWAIIAN BLUE\*  
SR.32 SRI 35



CRIMSON RED\*  
SR.33 SRI 34



FERN GREEN\*  
SR.28 SRI 29



BURNISHED SLATE\*  
SR.28 SRI 29



ASH GRAY\*  
SR.48 SRI 56



SADDLE TAN\*  
SR.48 SRI 56



DESERT SAND\*  
SR.42 SRI 48



KOKO BROWN\*  
SR.28 SRI 30



CHARCOAL GRAY\*  
SR.28 SRI 30



GALLERY BLUE\*  
SR.28 SRI 30



RUSTIC RED\*  
SR.36 SRI 40



LIGHT STONE\*  
SR.50 SRI 58



POLAR WHITE\*  
SR.58 SRI 69  
\* Also available in 29-gauge

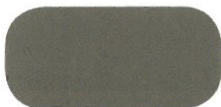
- Final color selection should be made from actual color chips.

## ❖ SIGNATURE® 300 Standard Colors

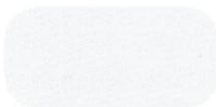
**KYNAR 500®  
HYLAR 5000®  
LOW GLOSS**

26-GAUGE MATERIAL  
PBR, PBU, PBA, PBC, PBD Panels only

- Also available in 24-gauge



MEDIUM BRONZE\*  
SR.33 SRI 36



SNOW WHITE\*  
SR.65 SRI 79



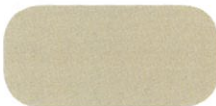
SLATE GRAY\*  
SR.37 SRI 41



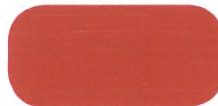
ALMOND\*  
SR.63 SRI 76



CLASSIC GREEN\*  
SR.28 SRI 30



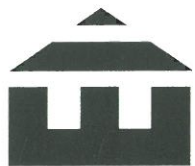
BROWNSTONE\*  
SR.47 SRI 54



BRITE RED  
SR.49 SRI 55



HARBOR BLUE\*  
SR.28 SRI 30



**EXPRESS®**  
BUILDING SYSTEMS, INCORPORATED

Express Building Systems, Inc.  
1041 Crown Park Circle  
Winter Garden, FL 34787  
Phone: (800) 337-5518  
Fax: (407) 877-6674  
[www.expbdgsys.com](http://www.expbdgsys.com)

★ ENERGY STAR  
Qualified Color

